

Employee Assistance Program (EAP) and WillPrep Services

New Features



Digital cognitive behavioral health coaching that uses an evidence-based support framework to match employees with the appropriate level of care based on their unique needs and preferences; these **online modules and ‘live’ coaching** can help employees improve their overall mental health and well-being.



Tools and coaching to help employees **negotiate lower payments** for medical bills



Expanded discounted legal/estate planning package options*:

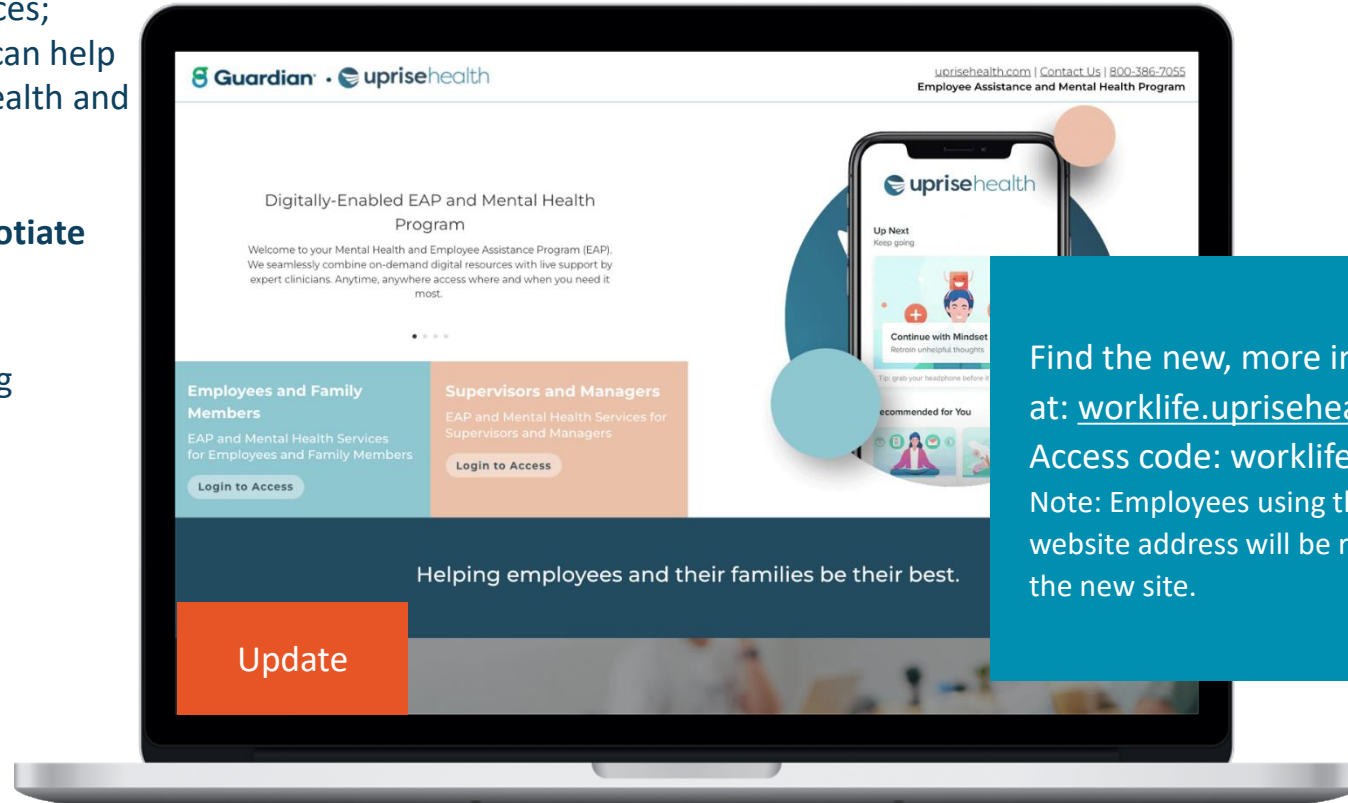
- \$100 attorney assisted will package
- \$179 couples will package
- \$649 individual trust package
- \$999 couples trust package

*Package cost paid by the employee.

Enhancement



Increased number of counseling visits allowed from **3 per year to 3 per issue per year**



Find the new, more intuitive site at: worklife.uprisehealth.com
 Access code: worklife
 Note: Employees using the previous website address will be redirected to the new site.